

# Setup

English

4044629-00  
xxx

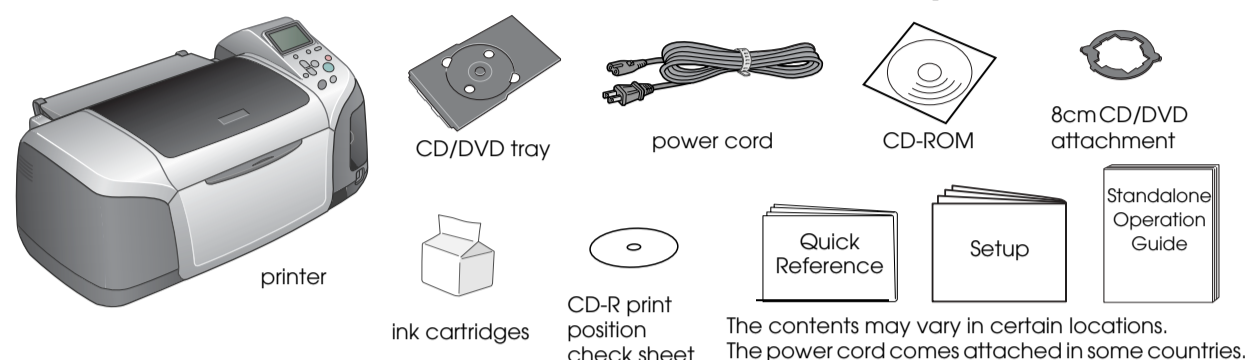
Cautions and Notes

**Cautions** must be observed to avoid damage to your equipment.

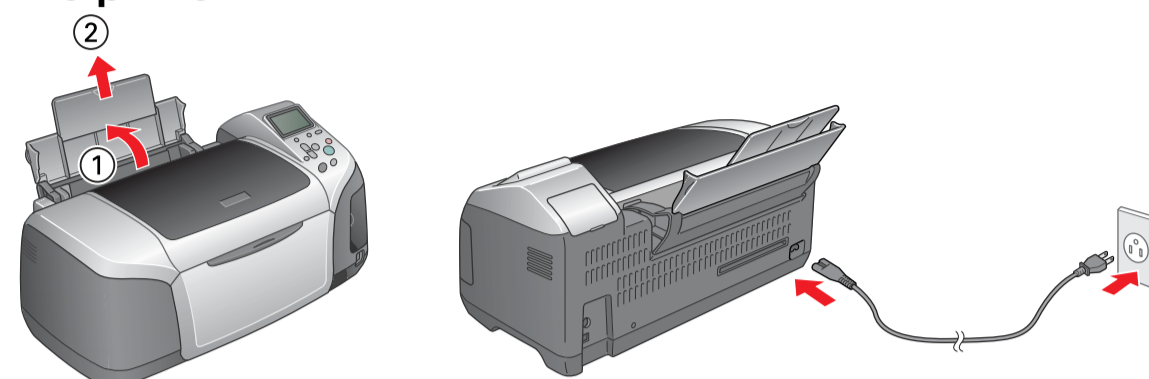
**Notes** contain important information and useful tips on the operation of your printer.

## 1 Unpacking

1. Remove the contents from the box. Remove all packing tape and packing material from outside and inside the printer. Be sure not to touch the ribbon cable inside the printer.

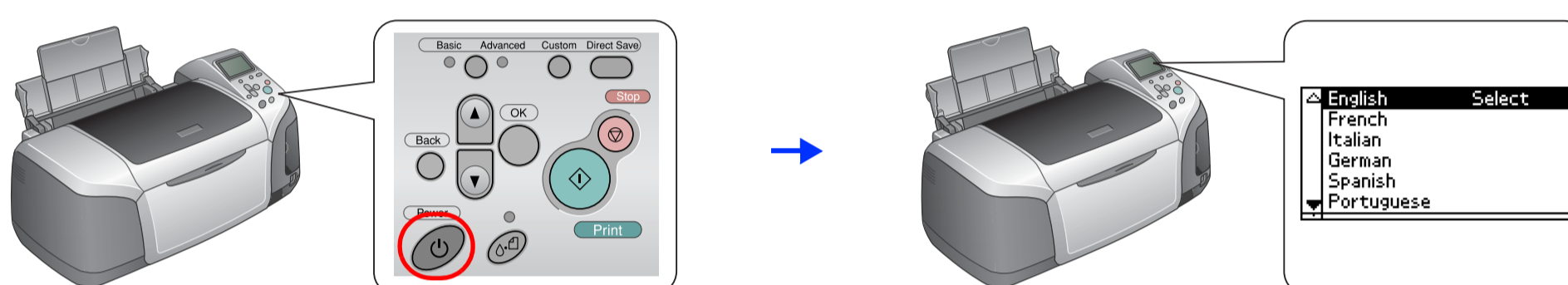


2. Open the paper support, then slide out the extension and plug in the printer.

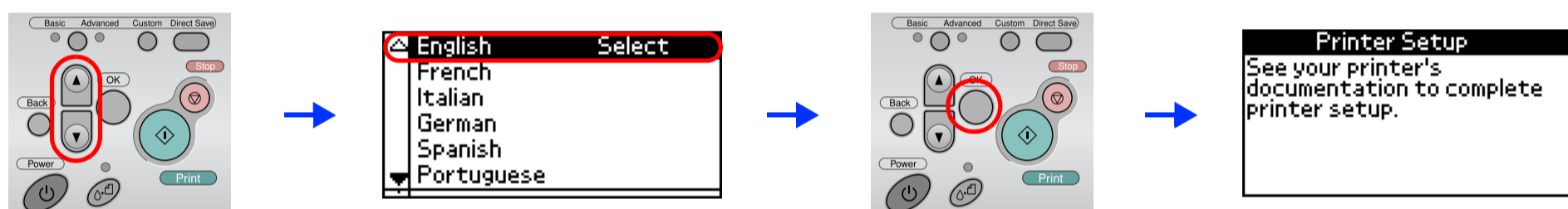


## 2 Installing the Ink Cartridges

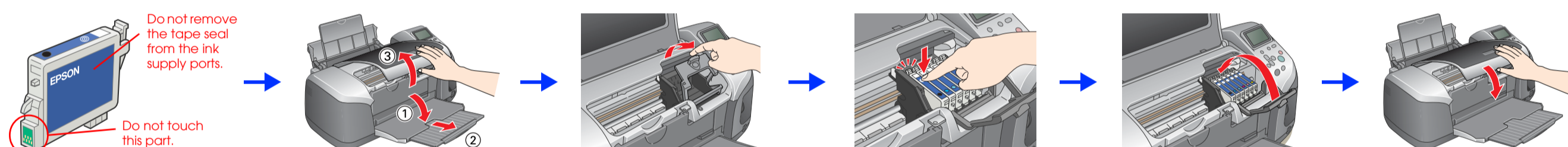
1. Press the power button to turn on the printer.



2. Press the ▲ or ▼ button to highlight your preferred language, then press the OK button.



3. Remove the ink cartridges from their protective bags, then install the ink cartridges as shown below.



**Caution:**

- ❑ Do not shake the ink cartridges; this can cause leakage.
- ❑ Be careful not to break the hook on the side of the ink cartridge when you remove it from the protective bag.
- ❑ Do not remove or tear the label on the cartridge; this can cause leakage.
- ❑ Do not move the print head by hand; otherwise, you may damage the printer.
- ❑ Push the ink cartridge down until it clicks into place.
- ❑ Do not load paper until ink charging is complete.

**Note:**

Install all ink cartridges. The printer will not work unless all cartridges are installed properly.

4. Press the maintenance button to start charging ink. Charging takes about one and a half minutes.



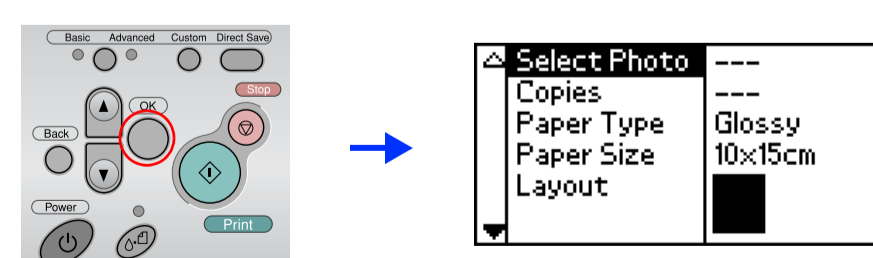
**Caution:**

Do not turn off the printer during the ink charging process.

**Note:**

The ink cartridges packaged with your printer are partly used during initial setup. In order to produce high quality printouts, the print head in your printer will be fully charged with ink. This one-off process consumes a quantity of ink and subsequent cartridge sets will last for their full rated life.

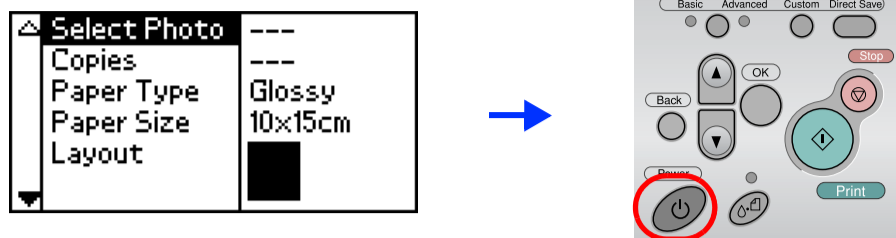
5. Press the OK button to finish.



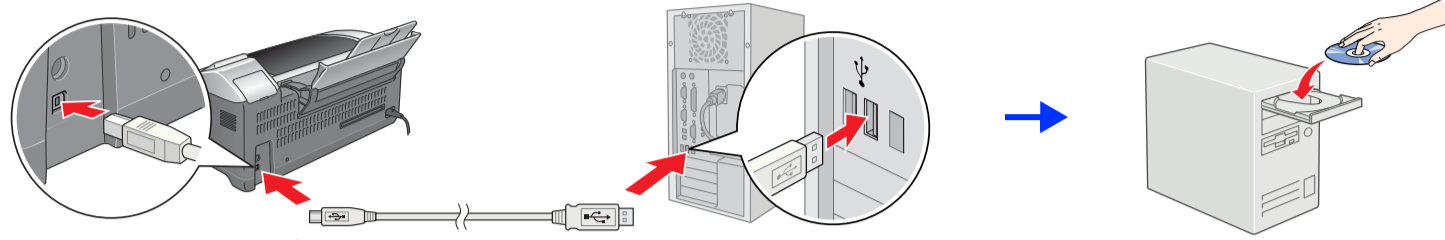
Your printer is now set up and ready to print directly from a memory card. Refer to the Standalone Operation Guide for instructions. To use the printer with a computer, refer to the other side of this sheet.

# 3 Installing the Printer Software

1. Press the  power button to turn off the printer.



2. Connect the printer and computer with a USB cable, then insert the printer software CD into the CD-ROM drive.



3. Install the printer software.

Select your country or area of residence if the selection window appears. Then except where otherwise instructed, click or double-click the areas circled in red to proceed.

**Caution:** Turn off all virus protection programs before installing the printer software.

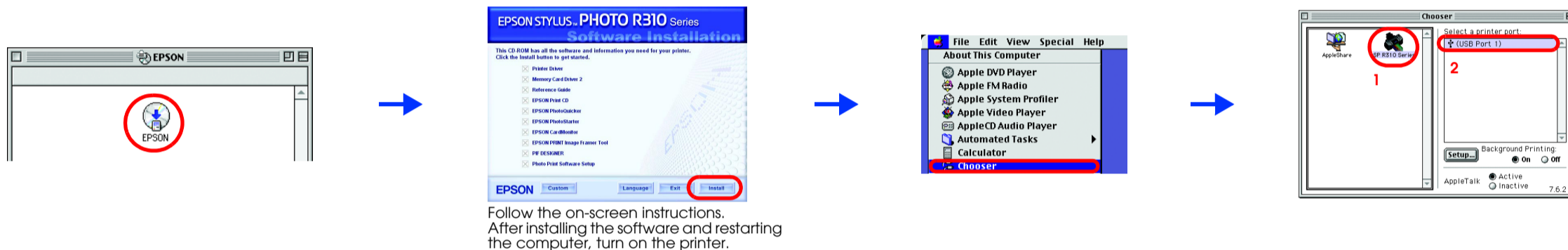
**Note:** If the language selection window appears, select your preferred language.

## For Windows



Follow the on-screen instructions.

## For Mac OS 8.6 to 9.X





Follow the on-screen instructions. After installing the software and restarting the computer, turn on the printer.

## For Mac OS X

### Note:

- This software does not support the UNIX File System (UFS) for Mac OS X. Install the software on a disk or in a partition that does not use UFS.
- This product does not support the Mac OS X Classic environment.

- Open the **Mac OS X** folder, then double-click the **EPSON** icon. If the Authorization dialog box appears, (for Mac OS 10.1.x, click the ) enter the **Password or phrase**, then click **OK**.
- Follow the on-screen instructions to install the software.
- After installing the software and restarting the computer, press the  button to turn on the printer.
- Open the **Applications** folder on your hard drive, then open the **Utilities** folder and double-click the **Print Center** icon. Click **Add** icon (for Mac OS 10.1.x, click **Add Printer**) in the Printer List dialog box.
- Select **EPSON USB** from the pop-up menu. Select **Stylus Photo R310** in the Product list, then select **All** from the Page Setup pop-up menu. Click **Add**.
- Make sure the Printer List contains the printer(margin-type) options as illustrated below. See the *Reference Guide* for more details.




- Close Printer List dialog box.

### Note:

When you print, be sure to match the **Format** for setting in the Page Setup dialog box and the **Printer** setting in the Print dialog box. Otherwise, the data may not be printed correctly. See the *Reference Guide* for more details.

After installation is complete, see the **Reference Guide** for detailed information about printing from your computer for the first time.

The CD-ROM includes EPSON Print CD, EPSON PhotoQuicker, EPSON PhotoStarter, EPSON CardMonitor, EPSON PRINT Image Framing Tool, and PIF DESIGNER.

You can print on CD/DVDs to make your own original CD/DVDs using EPSON Print CD which is included with this printer. For more details, double click the  **ESPR310 Reference Guide** icon on the desktop.

EPSON PhotoQuicker is a fun and easy to use program with a number of features that help you create outstanding photos. It also allows you to create borderless photos.

For more details, double-click the  **ESPR310 Software Guide** icon on the desktop to view *Photo Print Software Setup*.

# 4 Viewing the Reference Guide

The *Reference Guide* provides detailed information about printing from a computer, printer maintenance, problem solving, and safety.

To view the *Reference Guide*, double-click the  **ESPR310 Reference Guide** icon on the desktop.

In Windows, you can also access the *Reference Guide* via the Start menu. To do so, click **Start**, point to **All Programs** in Windows XP or **Programs** in Windows Me, 98, or 2000, point to **EPSON**, then select **ESPR310 Reference Guide**.

